

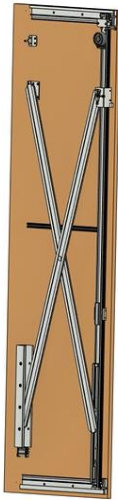
# HAWA POCKET SHELL SINGLE DOOR CABINET

ZONAVITA

FOR MODERN LIFE

## PACKAGED PARTS

Inner Panel with Hardware



Hinge Door

Top Floor Inner

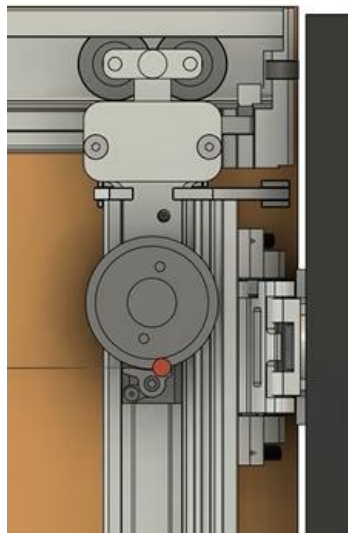


Door Closing System

Inner Panel without Hardware



End Panel  
(Not with All SKUs)



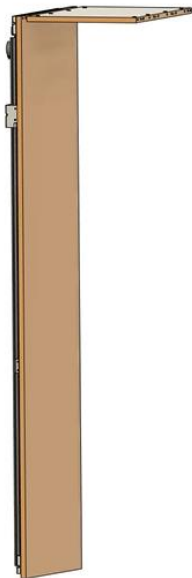
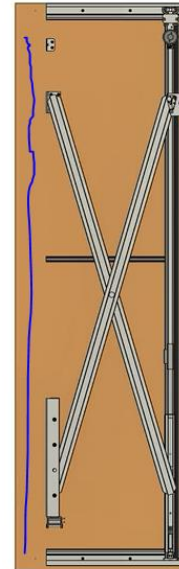
# HAWA POCKET SHELL SINGLE DOOR CABINET

ZONAVITA

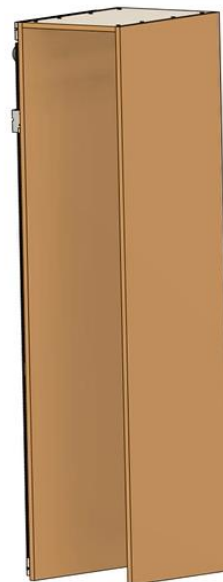
FOR MODERN LIFE

## INSTALL INSTRUCTIONS

1. Unpackage the Inner Panel with Hardware, Top Floor, and Inner Panel without Hardware.
  - Note the space behind the hardware which can be used for L-brackets or wood blocking to attach pocket shell to the wall. See blue line.
  - If scribing, then it is recommended to scribe these pieces now before they are assembled to create the pocket shell.



2. Install the Top Floor to the Inner Panel with Hardware using the supplied Minifix hardware.



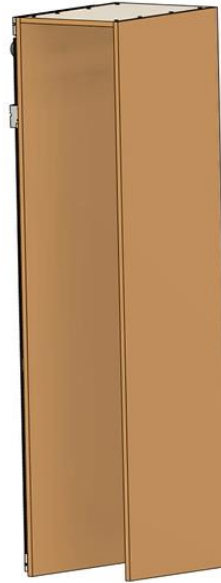
3. Install the Top Floor to the Inner Panel without Hardware using the supplied Minifix hardware.

# HAWA POCKET SHELL SINGLE DOOR CABINET

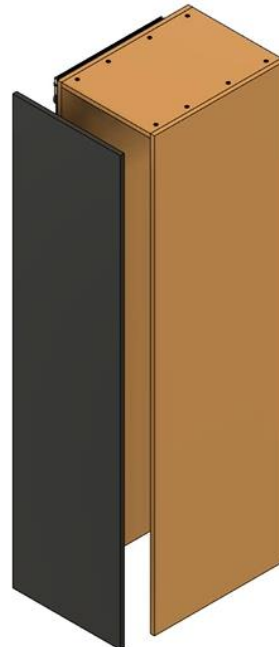
ZONAVITA

FOR MODERN LIFE

4. Install the Pocket Shell to the wall.
  - Use installer supplied L-brackets or wood blocking to attached pocket shell to the wall.
  - It is important to Adjust and Level the sides and front of the pocket shell at this stage as there is not a lot of adjustment in the door.



5. Attach the Hinge Door.
  - Once the door is attached, then tighten each hinge using the supplied Allen wrench. Note that there are 2 screws per hinge to tighten.



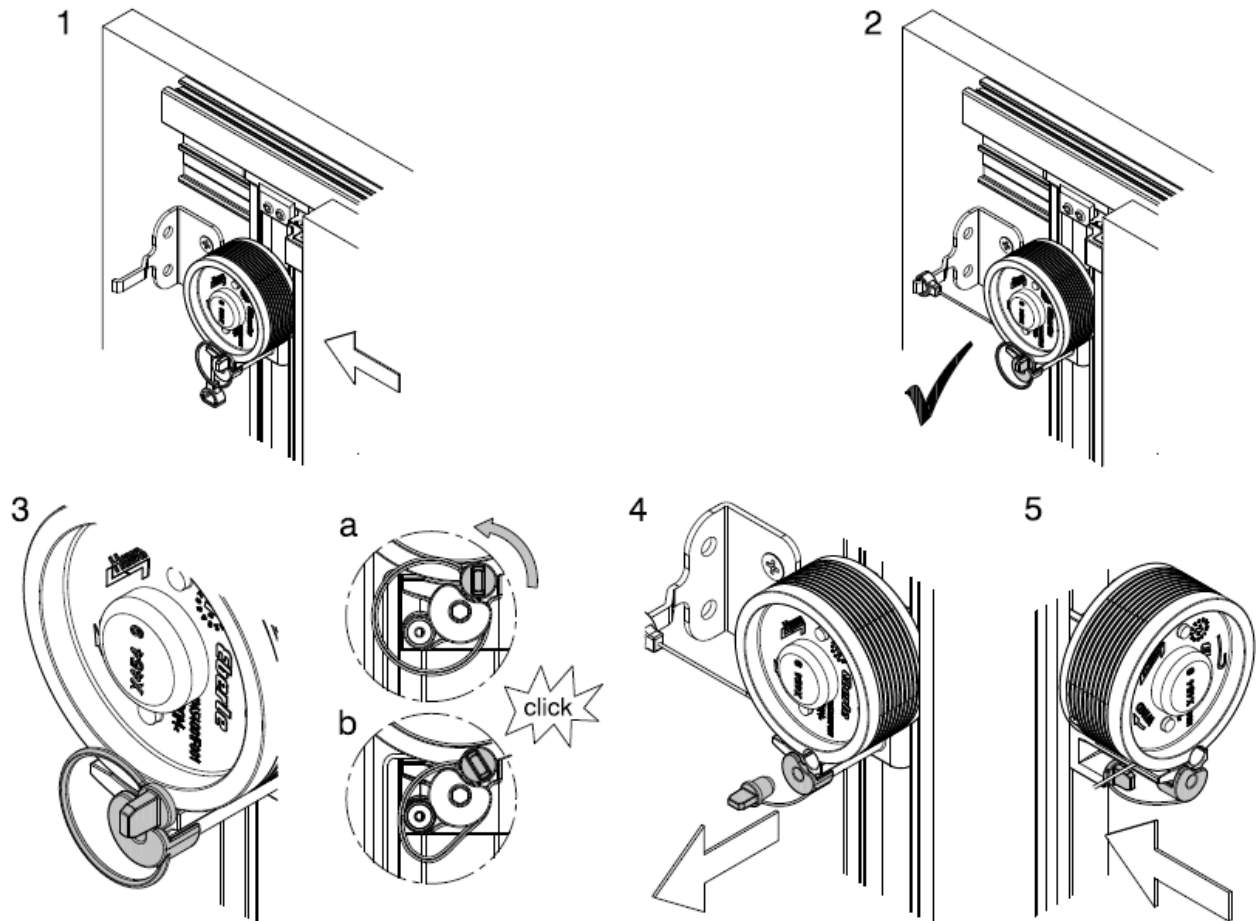
# HAWA POCKET SHELL SINGLE DOOR CABINET

ZONAVITA

FOR MODERN LIFE

## 6. Install the Door Closing System

- Attach the pull cable
- Turn the safety plug
- Pull the safety plug out
- Insert the safety plug in the provided drill hole

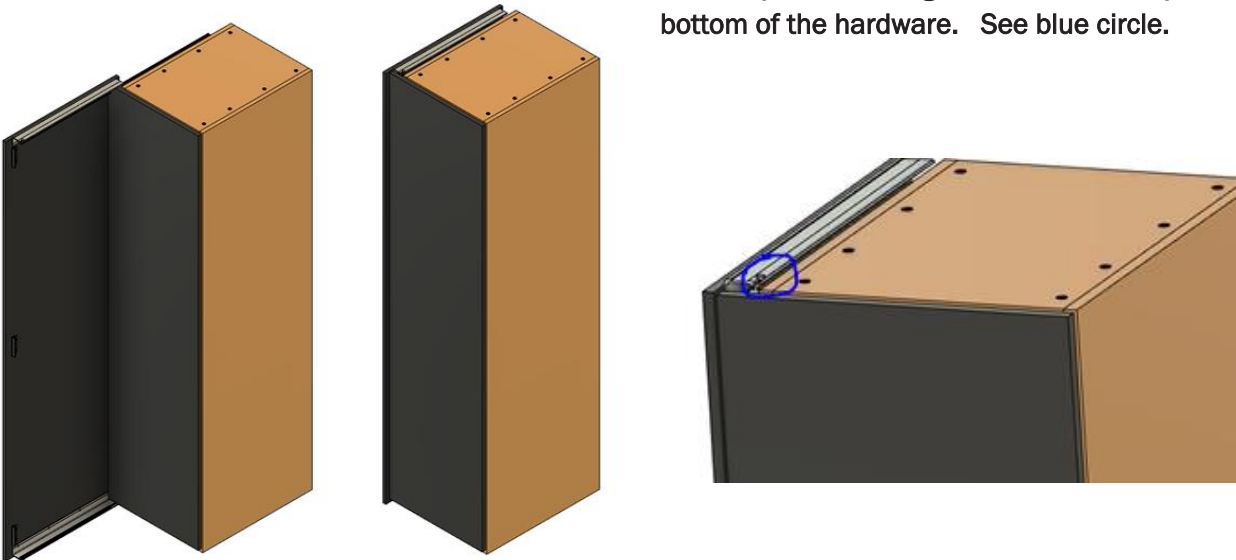


# HAWA POCKET SHELL SINGLE DOOR CABINET

ZONAVITA

FOR MODERN LIFE

7. Install the End Panel (Optional SKU) if ordered to the pocket shell. It slides in from the front. Once in place, then tighten the bolt on top and bottom of the hardware. See blue circle.



8. Once everything is in place, then make any appropriate adjustments and level the door before continuing to install any inner cabinets or products if they are part of the design.

